



RIMBA LODGE TANJUNG PUTTING NATIONAL PARK

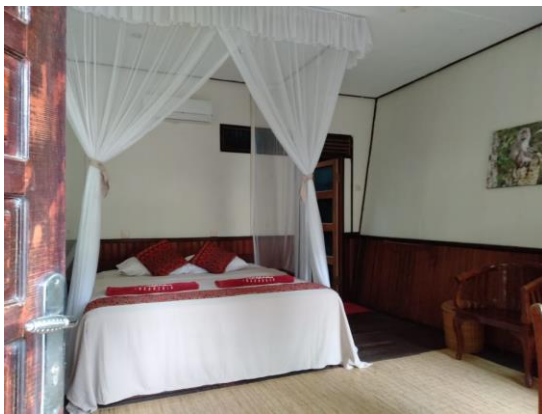


A western styled accommodation facility in the jungle of Tanjung Putting Park, with 3 types of Cousy rooms, with various rates.

The rooms are all air-conditioned, and have hot-cold water showers in the rooms

The wooden pavilion is surrounded by tranquil greenery of the lowland forest as the habitat of the orangutans

The Amities Room



The Emerald room

The Diamond Room with Terrace

